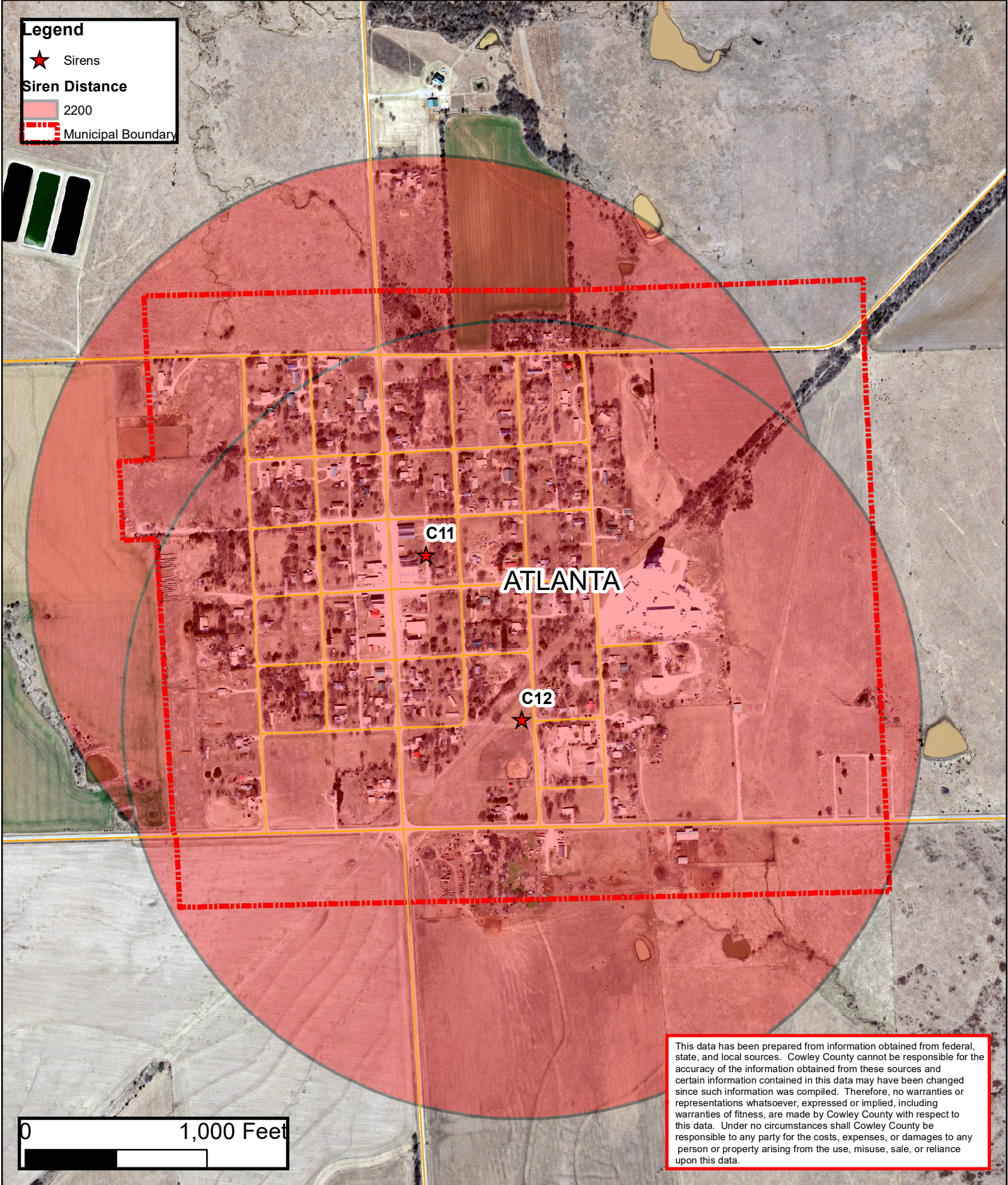




**Legend**

- ★ Sirens
- Siren Distance  
2200
- Municipal Boundary

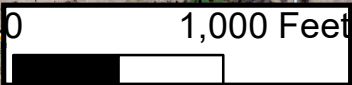
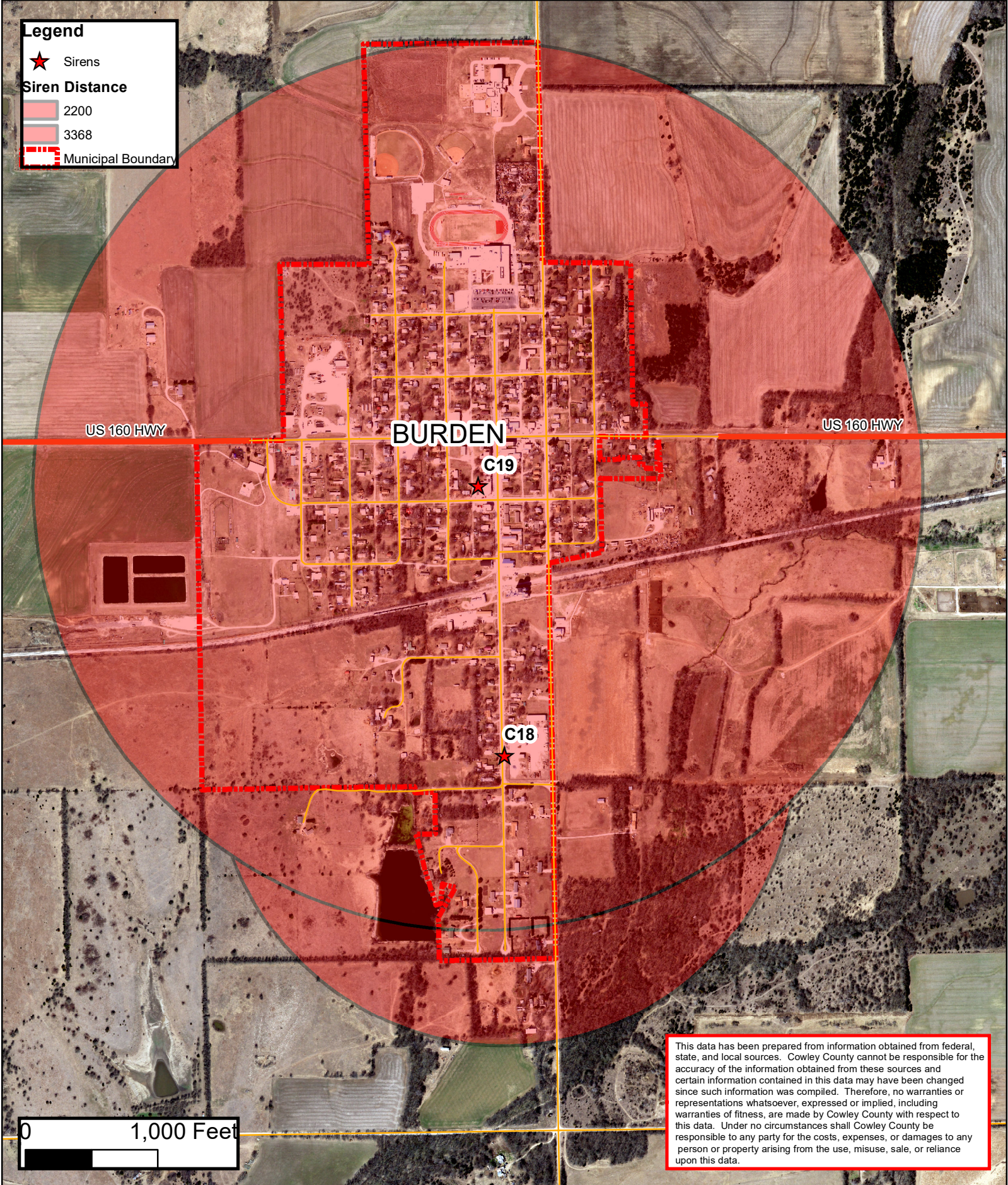


This data has been prepared from information obtained from federal, state, and local sources. Cowley County cannot be responsible for the accuracy of the information obtained from these sources and certain information contained in this data may have been changed since such information was compiled. Therefore, no warranties or representations whatsoever, expressed or implied, including warranties of fitness, are made by Cowley County with respect to this data. Under no circumstances shall Cowley County be responsible to any party for the costs, expenses, or damages to any person or property arising from the use, misuse, sale, or reliance upon this data.



**Legend**

- ★ Sirens
- Siren Distance**
  - 2200
  - 3368
- Municipal Boundary

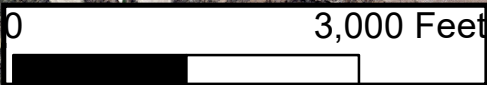
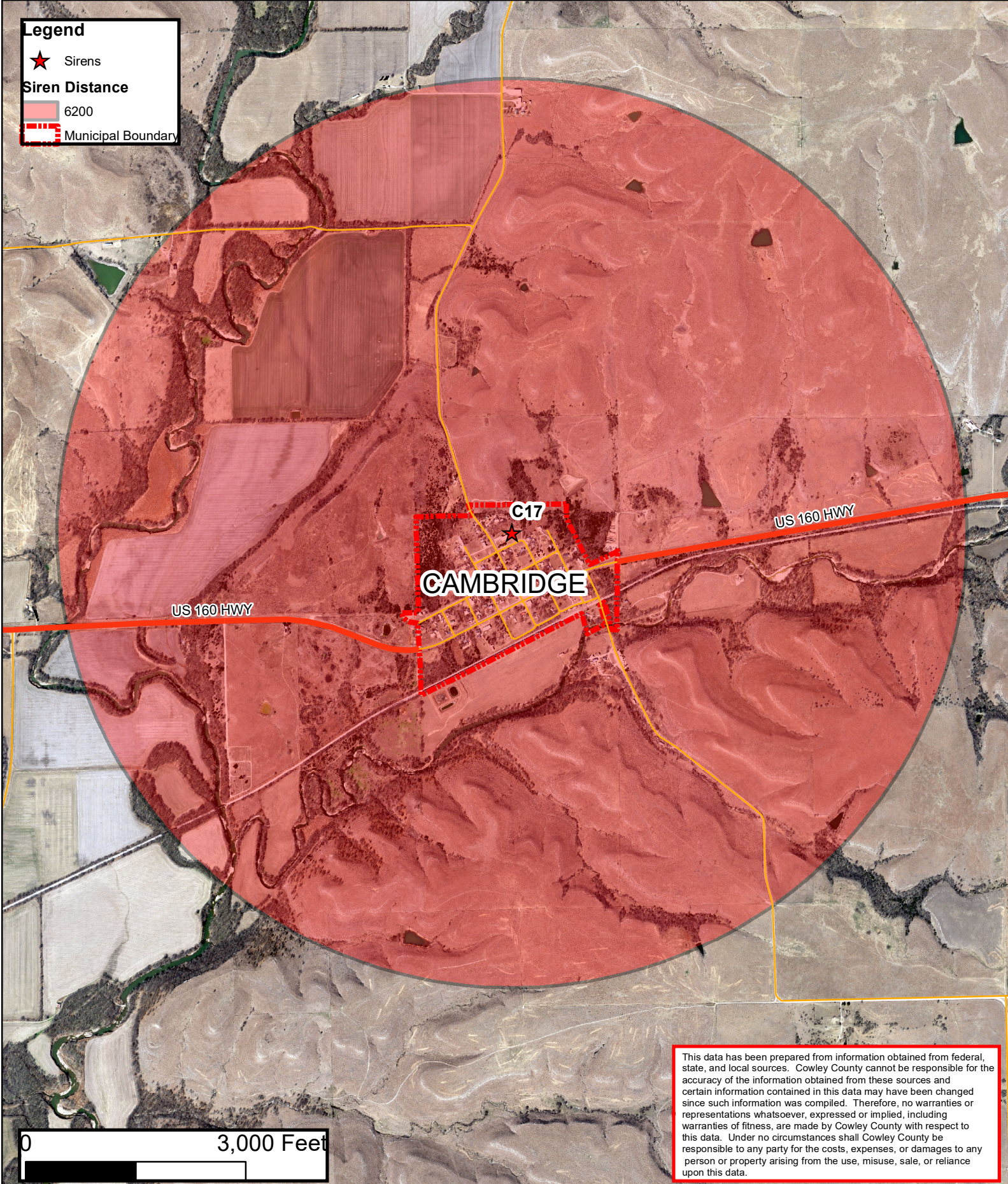


This data has been prepared from information obtained from federal, state, and local sources. Cowley County cannot be responsible for the accuracy of the information obtained from these sources and certain information contained in this data may have been changed since such information was compiled. Therefore, no warranties or representations whatsoever, expressed or implied, including warranties of fitness, are made by Cowley County with respect to this data. Under no circumstances shall Cowley County be responsible to any party for the costs, expenses, or damages to any person or property arising from the use, misuse, sale, or reliance upon this data.



**Legend**

- ★ Sirens
- Siren Distance  
6200
- Municipal Boundary

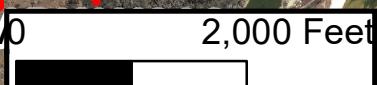
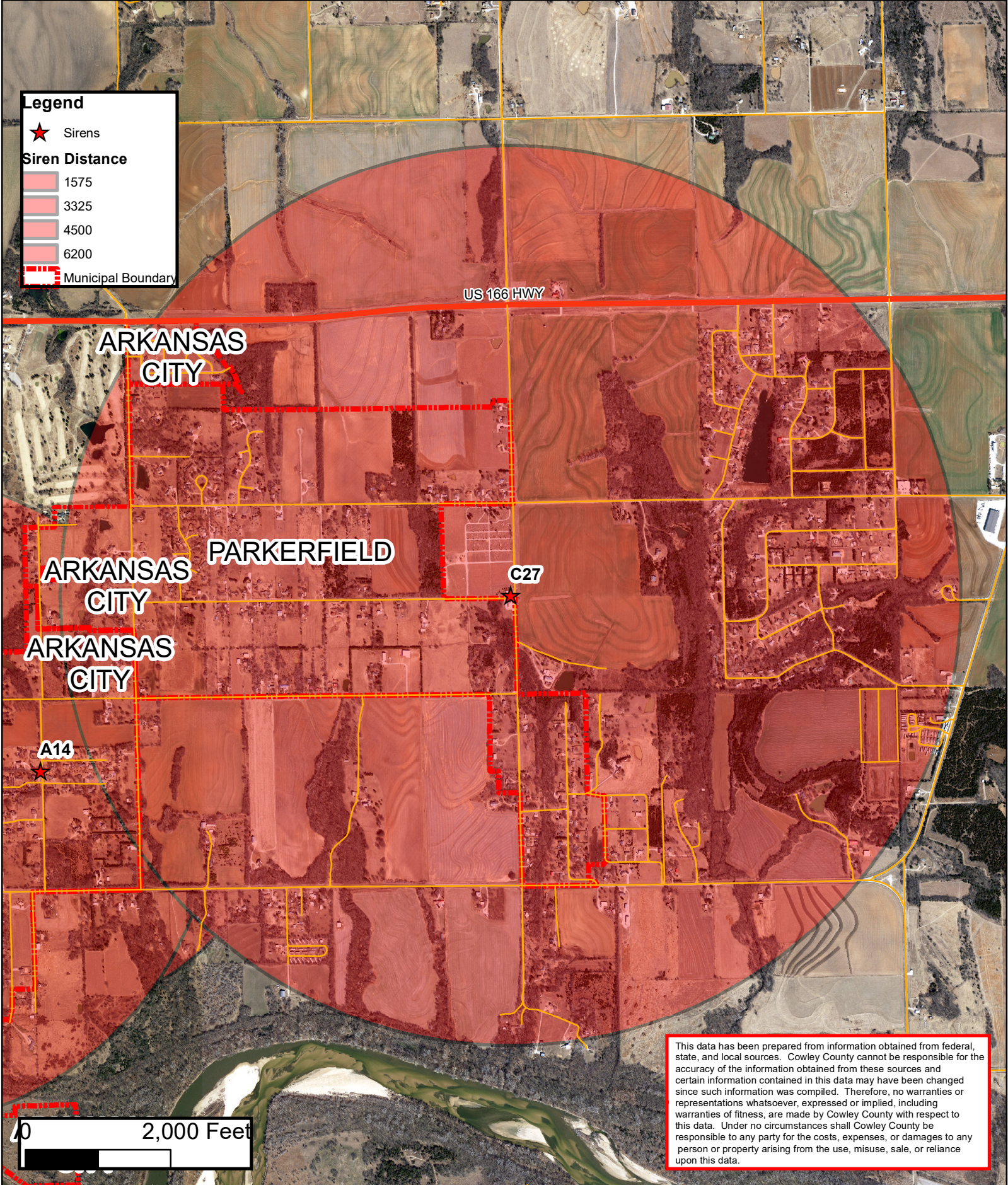


This data has been prepared from information obtained from federal, state, and local sources. Cowley County cannot be responsible for the accuracy of the information obtained from these sources and certain information contained in this data may have been changed since such information was compiled. Therefore, no warranties or representations whatsoever, expressed or implied, including warranties of fitness, are made by Cowley County with respect to this data. Under no circumstances shall Cowley County be responsible to any party for the costs, expenses, or damages to any person or property arising from the use, misuse, sale, or reliance upon this data.



**Legend**

- ★ Sirens
- Siren Distance**
- 1575
- 3325
- 4500
- 6200
- Municipal Boundary

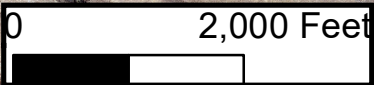
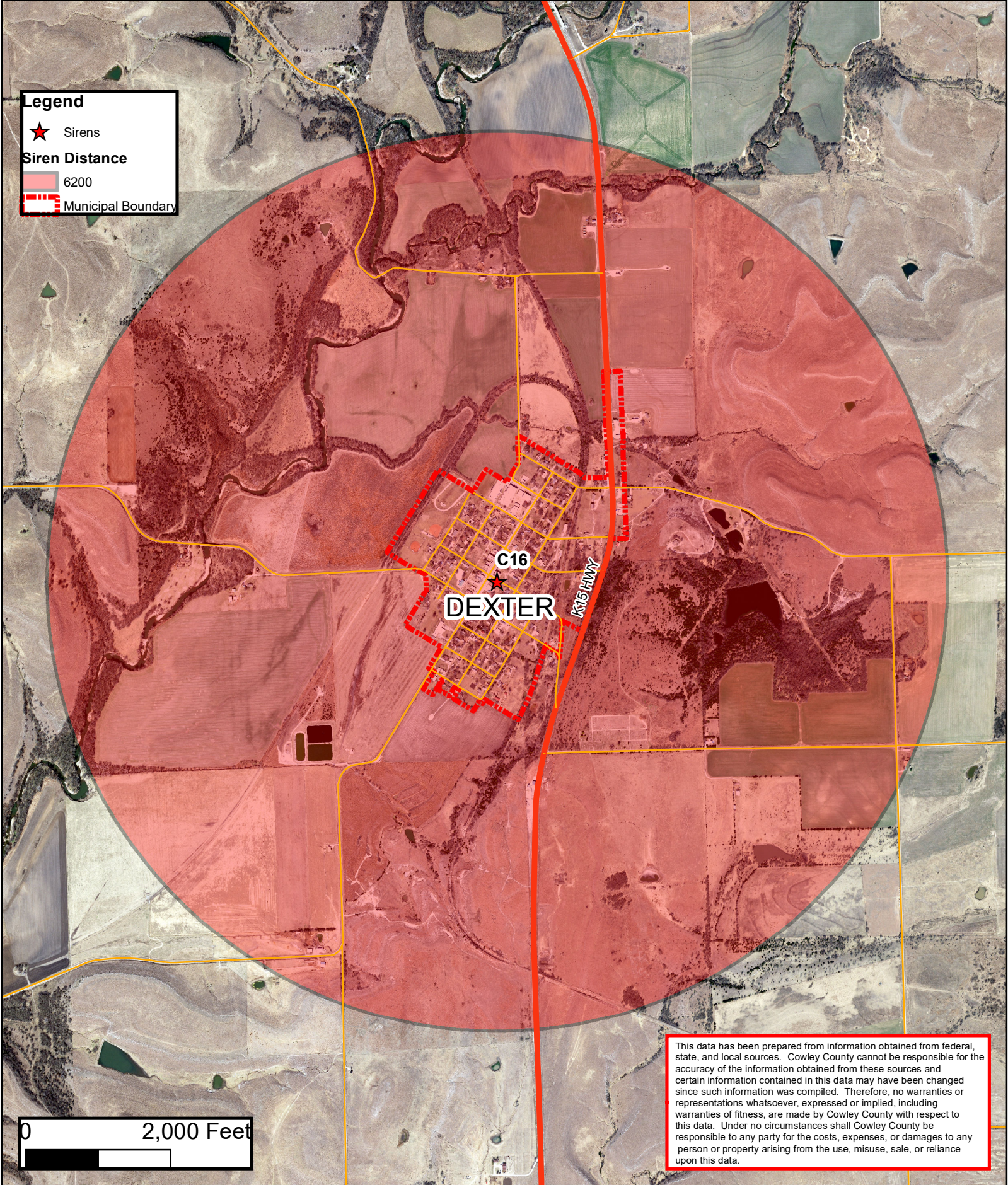


This data has been prepared from information obtained from federal, state, and local sources. Cowley County cannot be responsible for the accuracy of the information obtained from these sources and certain information contained in this data may have been changed since such information was compiled. Therefore, no warranties or representations whatsoever, expressed or implied, including warranties of fitness, are made by Cowley County with respect to this data. Under no circumstances shall Cowley County be responsible to any party for the costs, expenses, or damages to any person or property arising from the use, misuse, sale, or reliance upon this data.



**Legend**

- ★ Sirens
- Siren Distance  
6200
- Municipal Boundary

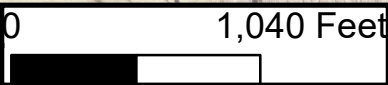
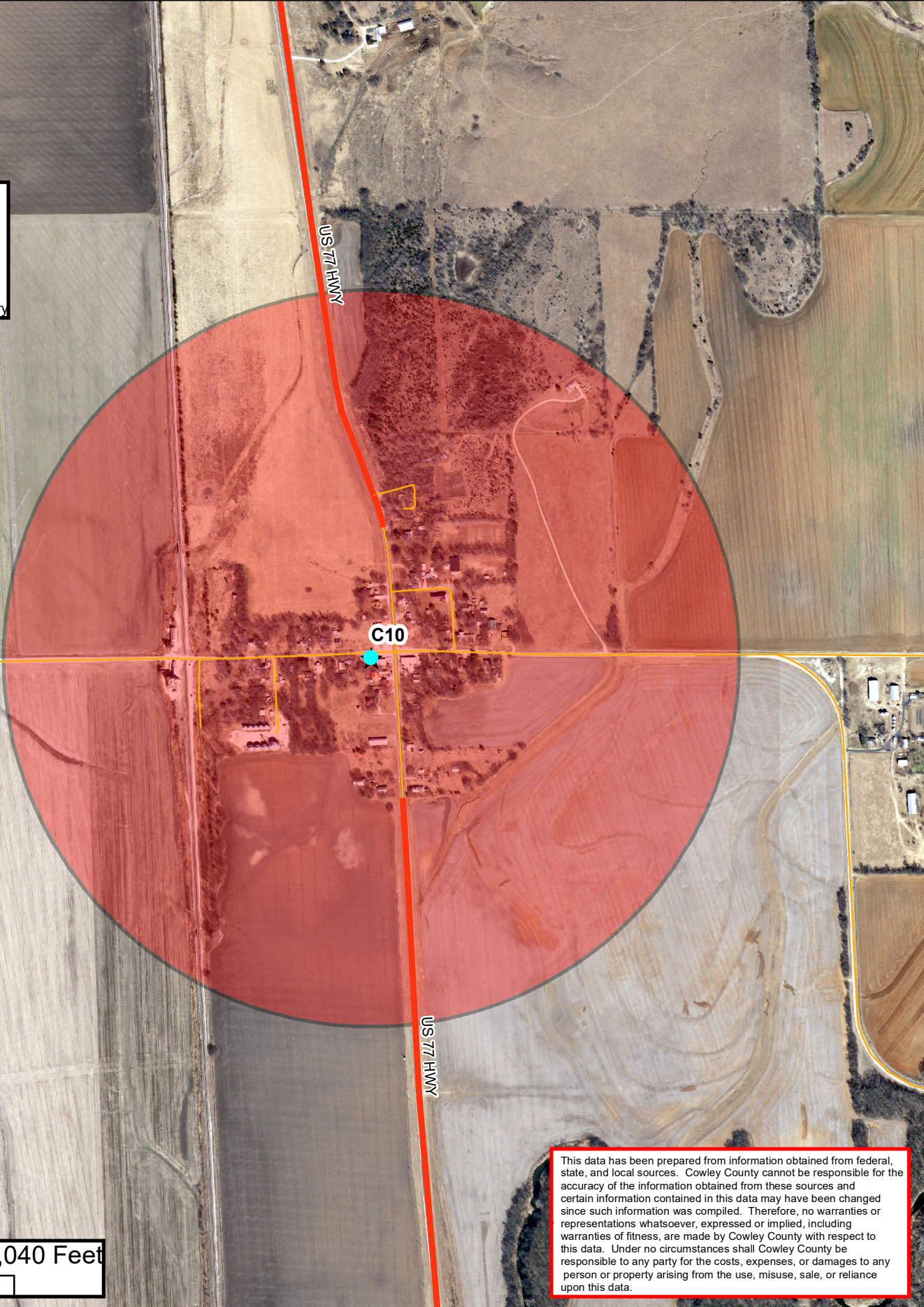


This data has been prepared from information obtained from federal, state, and local sources. Cowley County cannot be responsible for the accuracy of the information obtained from these sources and certain information contained in this data may have been changed since such information was compiled. Therefore, no warranties or representations whatsoever, expressed or implied, including warranties of fitness, are made by Cowley County with respect to this data. Under no circumstances shall Cowley County be responsible to any party for the costs, expenses, or damages to any person or property arising from the use, misuse, sale, or reliance upon this data.



**Legend**

- ★ Sirens
- Siren Distance  
2200
- Municipal Boundary



This data has been prepared from information obtained from federal, state, and local sources. Cowley County cannot be responsible for the accuracy of the information obtained from these sources and certain information contained in this data may have been changed since such information was compiled. Therefore, no warranties or representations whatsoever, expressed or implied, including warranties of fitness, are made by Cowley County with respect to this data. Under no circumstances shall Cowley County be responsible to any party for the costs, expenses, or damages to any person or property arising from the use, misuse, sale, or reliance upon this data.



**Legend**

- ★ Sirens
- Siren Distance**
- 2200
- 4500
- 5600
- Municipal Boundary

WINFIELD

US 77 HWY

C13

C15

C14

ARKANSAS  
CITY

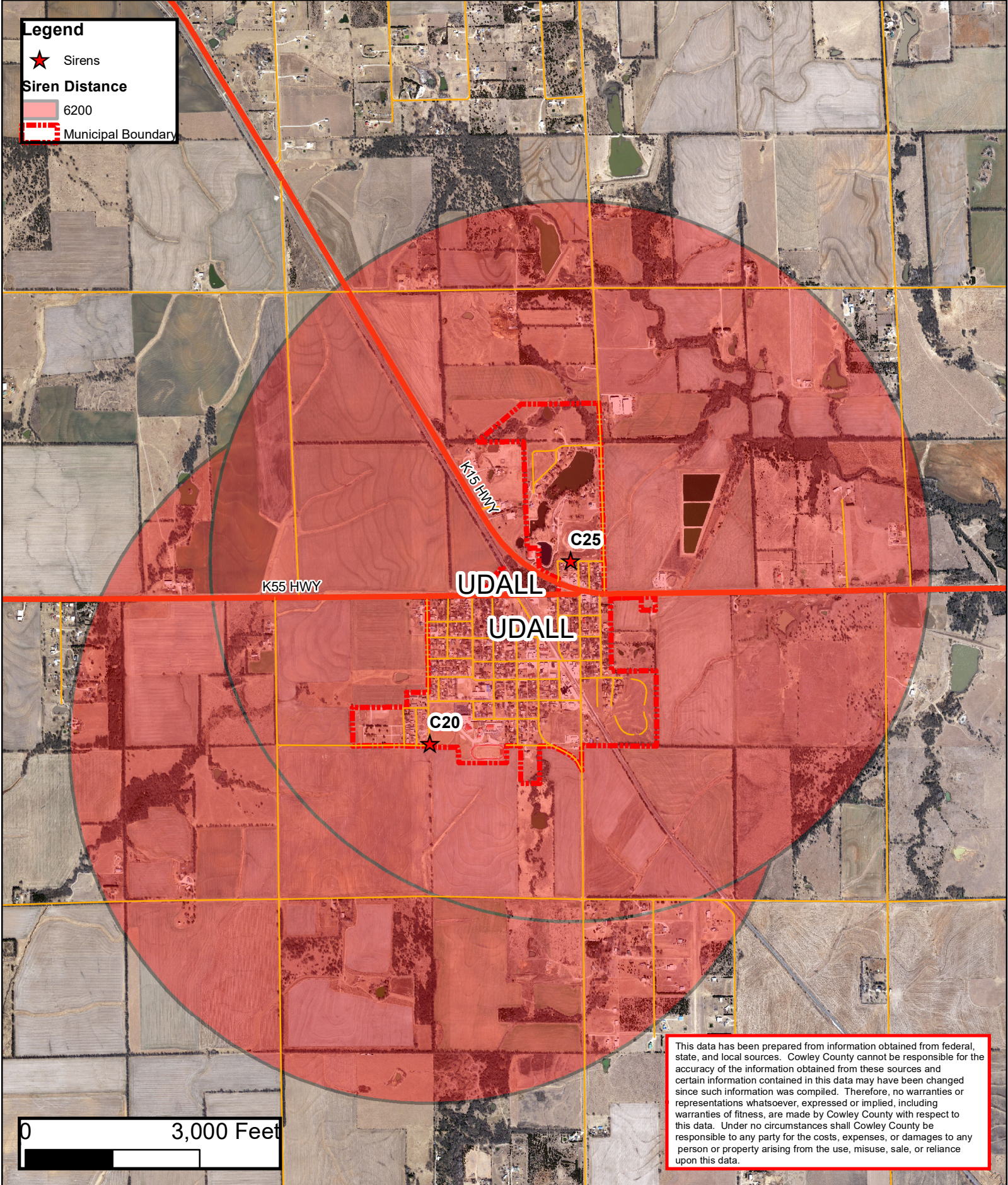
0 3,000 Feet

This data has been prepared from information obtained from federal, state, and local sources. Cowley County cannot be responsible for the accuracy of the information obtained from these sources and certain information contained in this data may have been changed since such information was compiled. Therefore, no warranties or representations whatsoever, expressed or implied, including warranties of fitness, are made by Cowley County with respect to this data. Under no circumstances shall Cowley County be responsible to any party for the costs, expenses, or damages to any person or property arising from the use, misuse, sale, or reliance upon this data.



**Legend**

- ★ Sirens
- Siren Distance  
6200
- Municipal Boundary



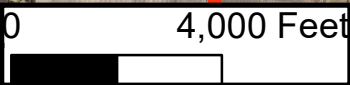
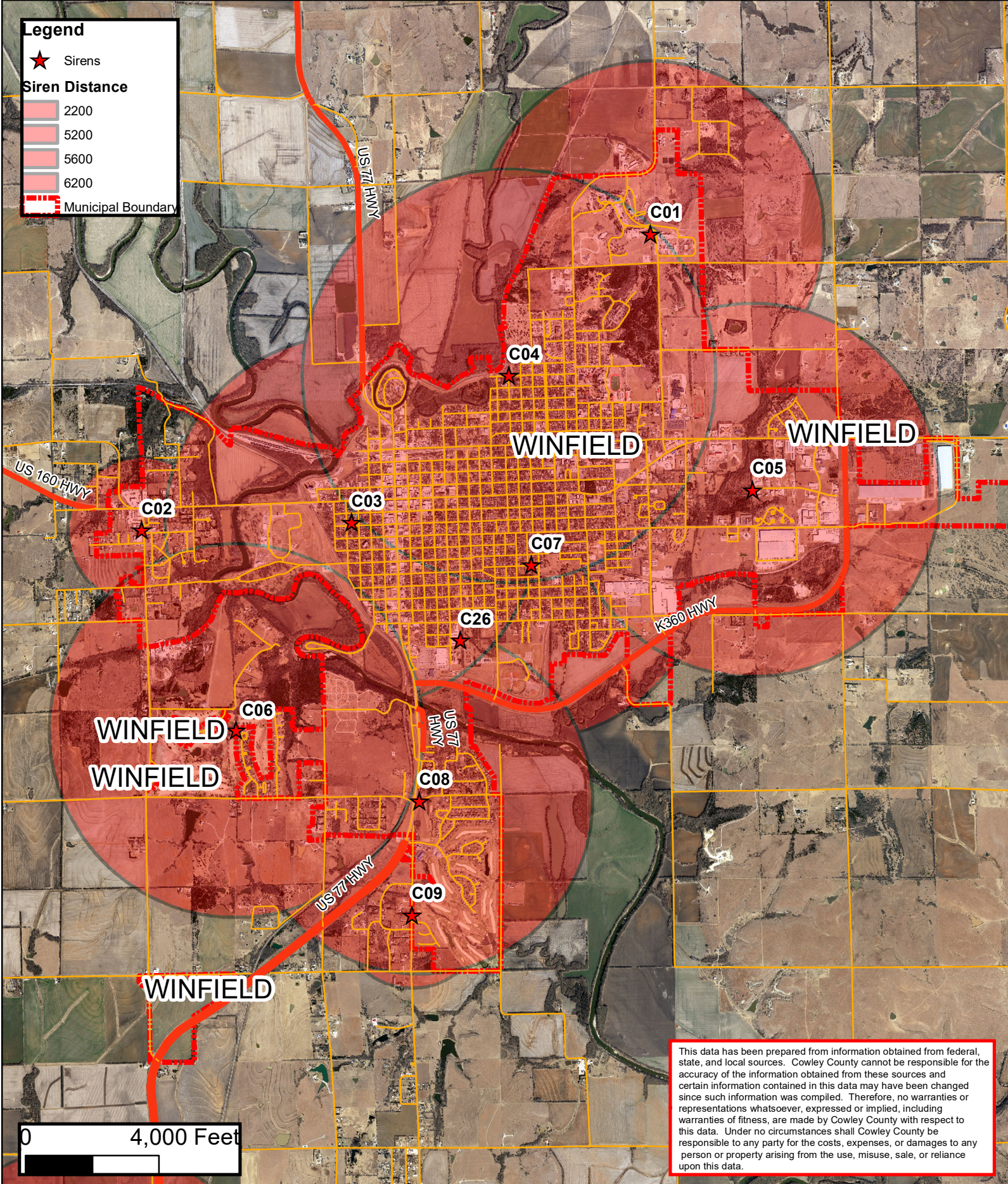
This data has been prepared from information obtained from federal, state, and local sources. Cowley County cannot be responsible for the accuracy of the information obtained from these sources and certain information contained in this data may have been changed since such information was compiled. Therefore, no warranties or representations whatsoever, expressed or implied, including warranties of fitness, are made by Cowley County with respect to this data. Under no circumstances shall Cowley County be responsible to any party for the costs, expenses, or damages to any person or property arising from the use, misuse, sale, or reliance upon this data.





**Legend**

- ★ Sirens
- Siren Distance**
- 2200
- 5200
- 5600
- 6200
- Municipal Boundary

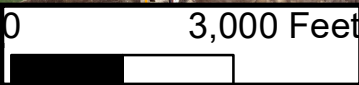
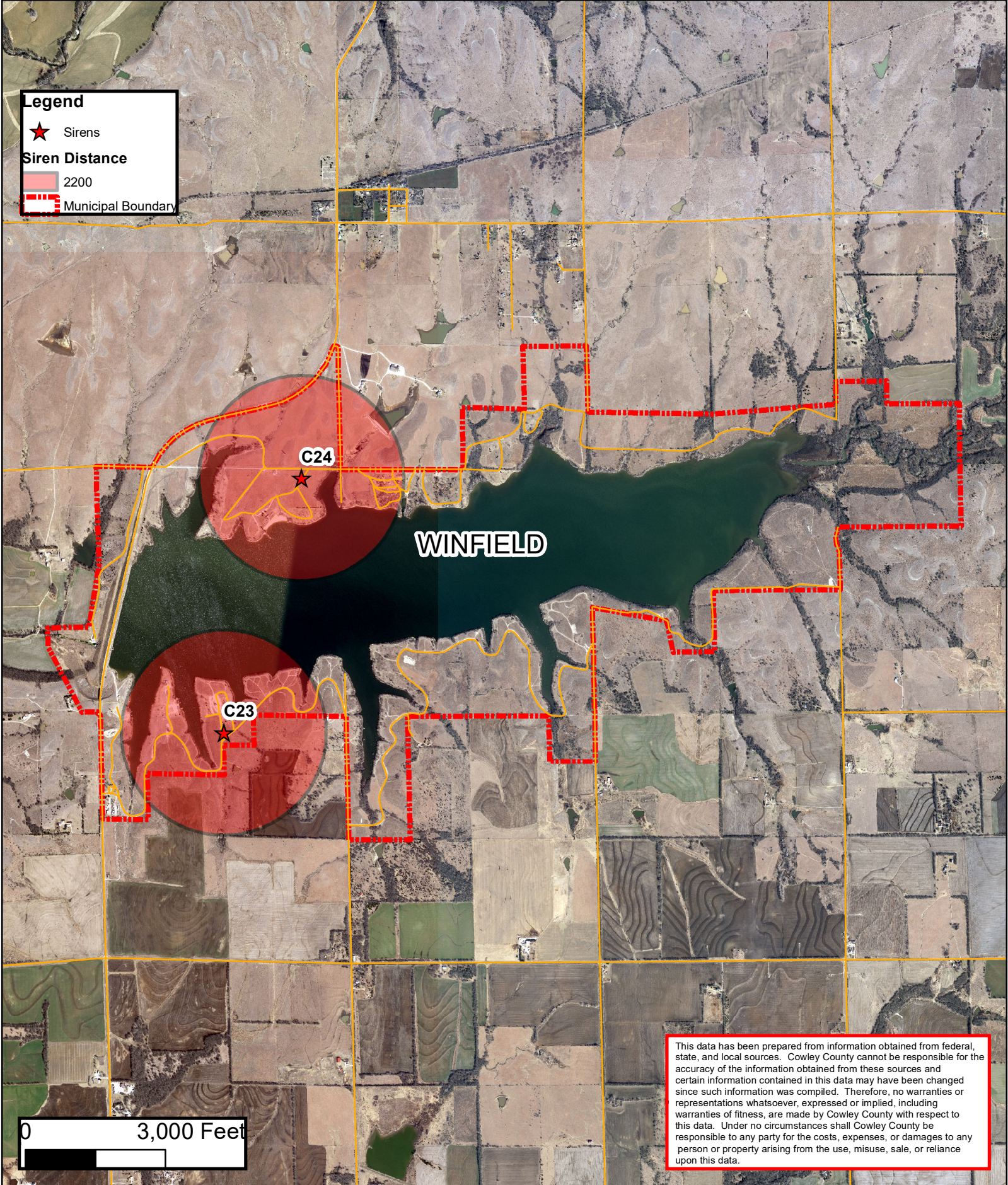


This data has been prepared from information obtained from federal, state, and local sources. Cowley County cannot be responsible for the accuracy of the information obtained from these sources and certain information contained in this data may have been changed since such information was compiled. Therefore, no warranties or representations whatsoever, expressed or implied, including warranties of fitness, are made by Cowley County with respect to this data. Under no circumstances shall Cowley County be responsible to any party for the costs, expenses, or damages to any person or property arising from the use, misuse, sale, or reliance upon this data.



**Legend**

- ★ Sirens
- Siren Distance
- 2200
- Municipal Boundary



This data has been prepared from information obtained from federal, state, and local sources. Cowley County cannot be responsible for the accuracy of the information obtained from these sources and certain information contained in this data may have been changed since such information was compiled. Therefore, no warranties or representations whatsoever, expressed or implied, including warranties of fitness, are made by Cowley County with respect to this data. Under no circumstances shall Cowley County be responsible to any party for the costs, expenses, or damages to any person or property arising from the use, misuse, sale, or reliance upon this data.